

*FUNCTIONAL SPACES AT THE
ITALY PAVILION*



ITALIA

LA BELLEZZA UNISCE LE PERSONE
BEAUTY CONNECTS PEOPLE
الجمال يجمع الناس



The Italy Pavilion

The Italy Pavilion

Location

The Italy Pavilion





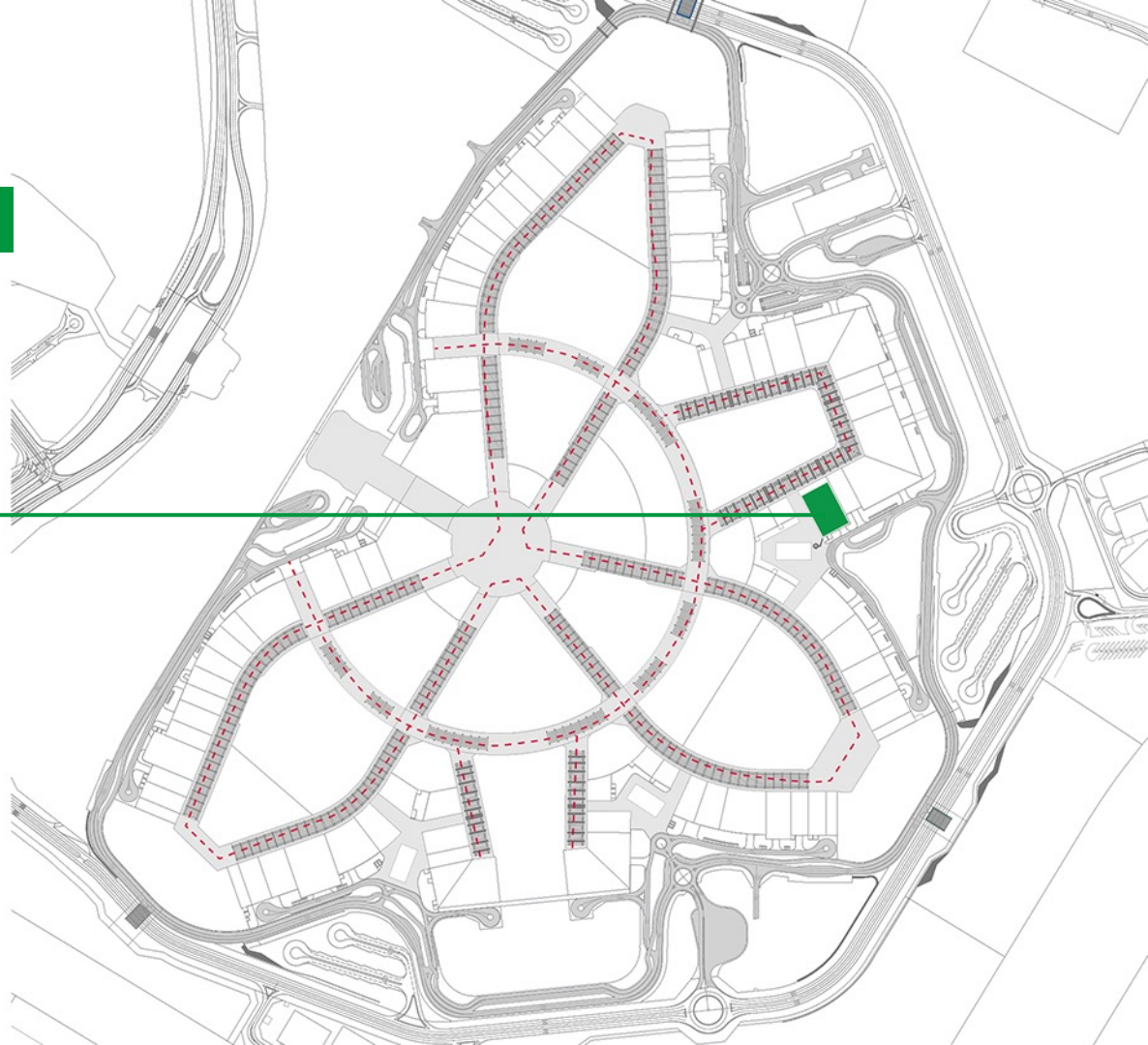
ITALIA

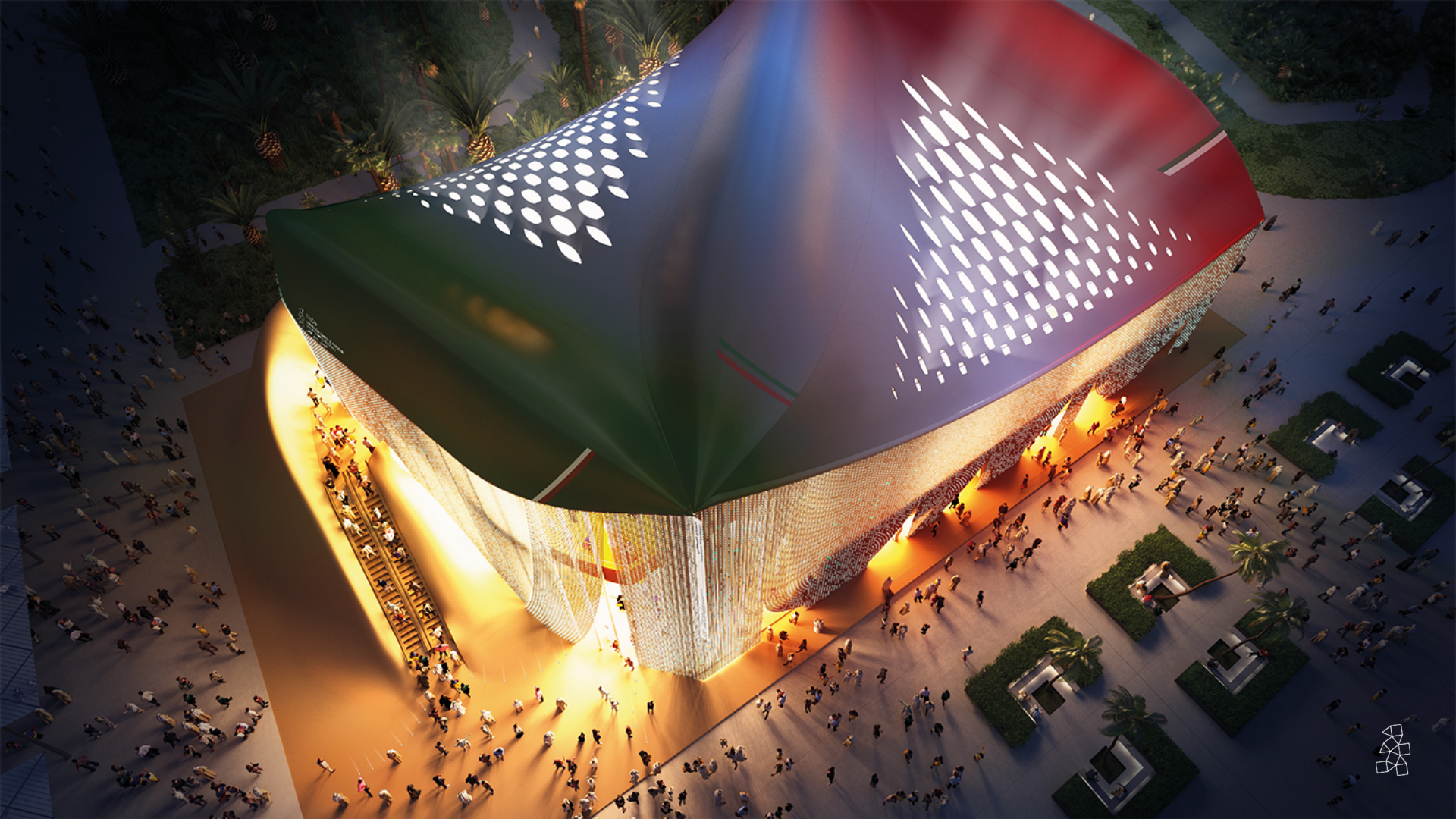
LA BELLEZZA UNISCE LE PERSONE

BEAUTY CONNECTS PEOPLE

الجمال يجمع الناس

-  LOCATION OF THE ITALY PAVILION EXPO WEBSITE
-  MAIN PEDESTRIAN FLOWS







U.A.E. NATIONAL UNIVERSITY OF SCIENCE AND TECHNOLOGY
Raffles City, Dubai

Artistic signature or logo consisting of stylized, overlapping loops.







The Italy Pavilion

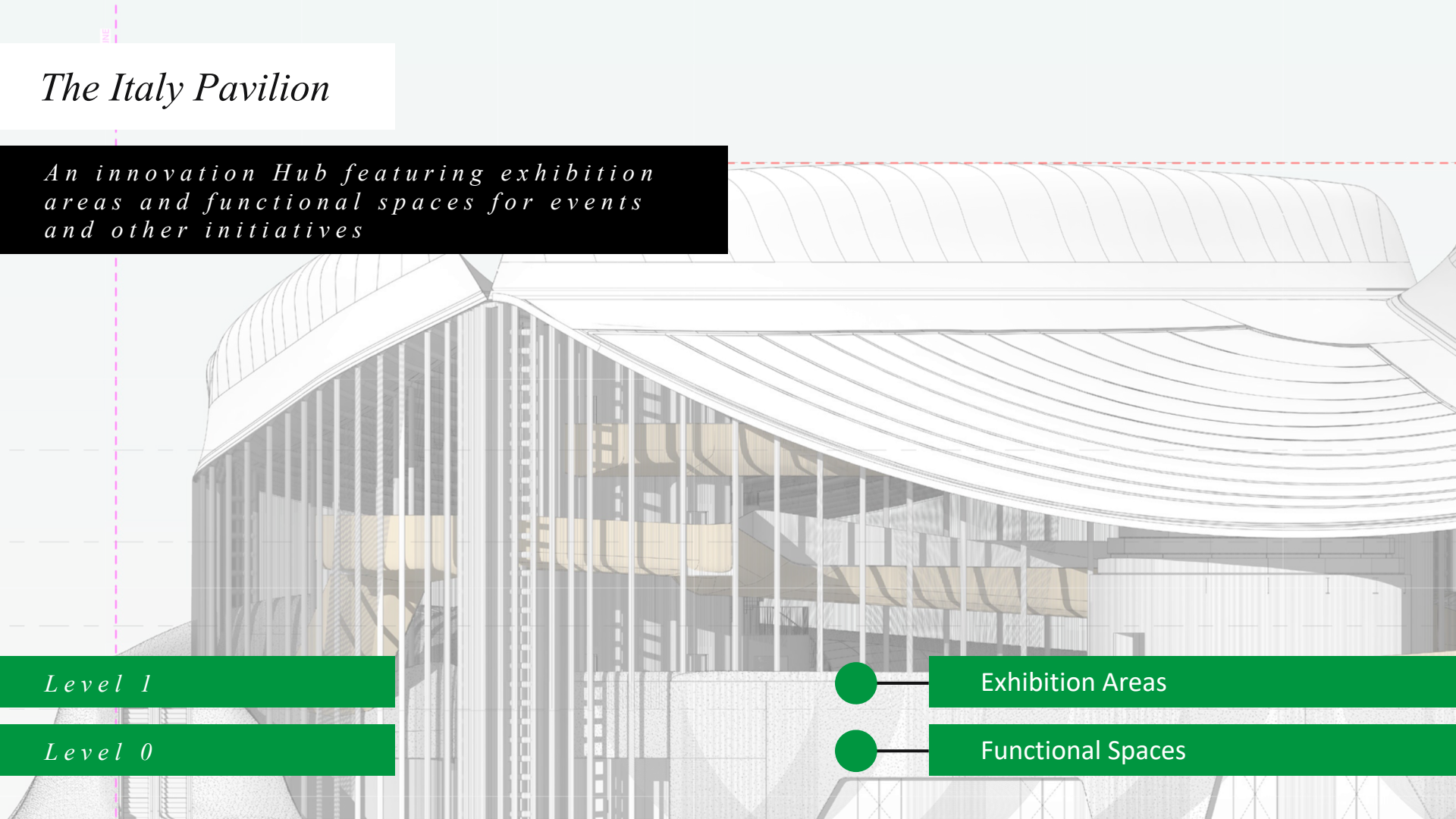
An innovation Hub featuring exhibition areas and functional spaces for events and other initiatives

Level 1

Level 0

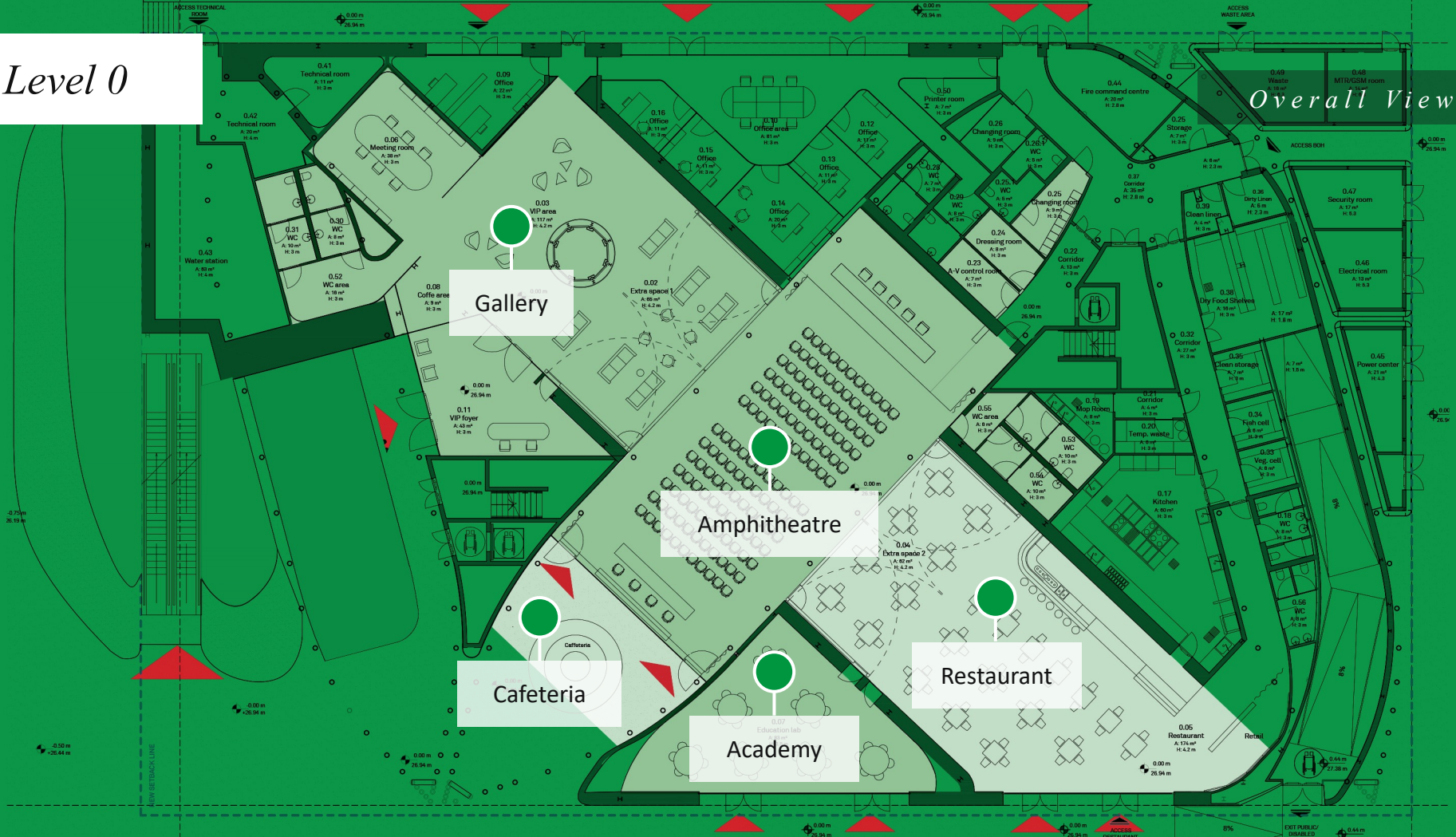
Exhibition Areas

Functional Spaces



Level 0

Overall View



AMPHITHEATRE

Characteristics

The Amphitheatre is a multifunctional area that can host a variety of events. It has a separate entrance, a dressing room and it's connected to the other functional spaces of the Italy Pavilion.





Finishes and furnishings are being defined and may be subject to changes; the image is provided for illustrative purposes to represent the space and its potential





Finishes and furnishings are being defined and may be subject to changes; the image is provided for illustrative purposes to represent the space and its potential



AMPHITHEATRE

Configuration A

Set up

Total surface area 255 m²

143 seats (mobile). Current Maximum Occupancy allowed: 43 people

4m x 9 m stage, table for panelists (on demand)

Dressing Room

Basic Technical Equipment

Audio system with 8 microphones

3.5 x 6.5 m LED Screen

Slide Control Kit

N.3 Remote Cameras

Simultaneous Interpretation Booths

Sound/Video/Lighting Engineers, Wi-Fi

Reception /Accreditation Service

VIP entrance and dedicated foyer

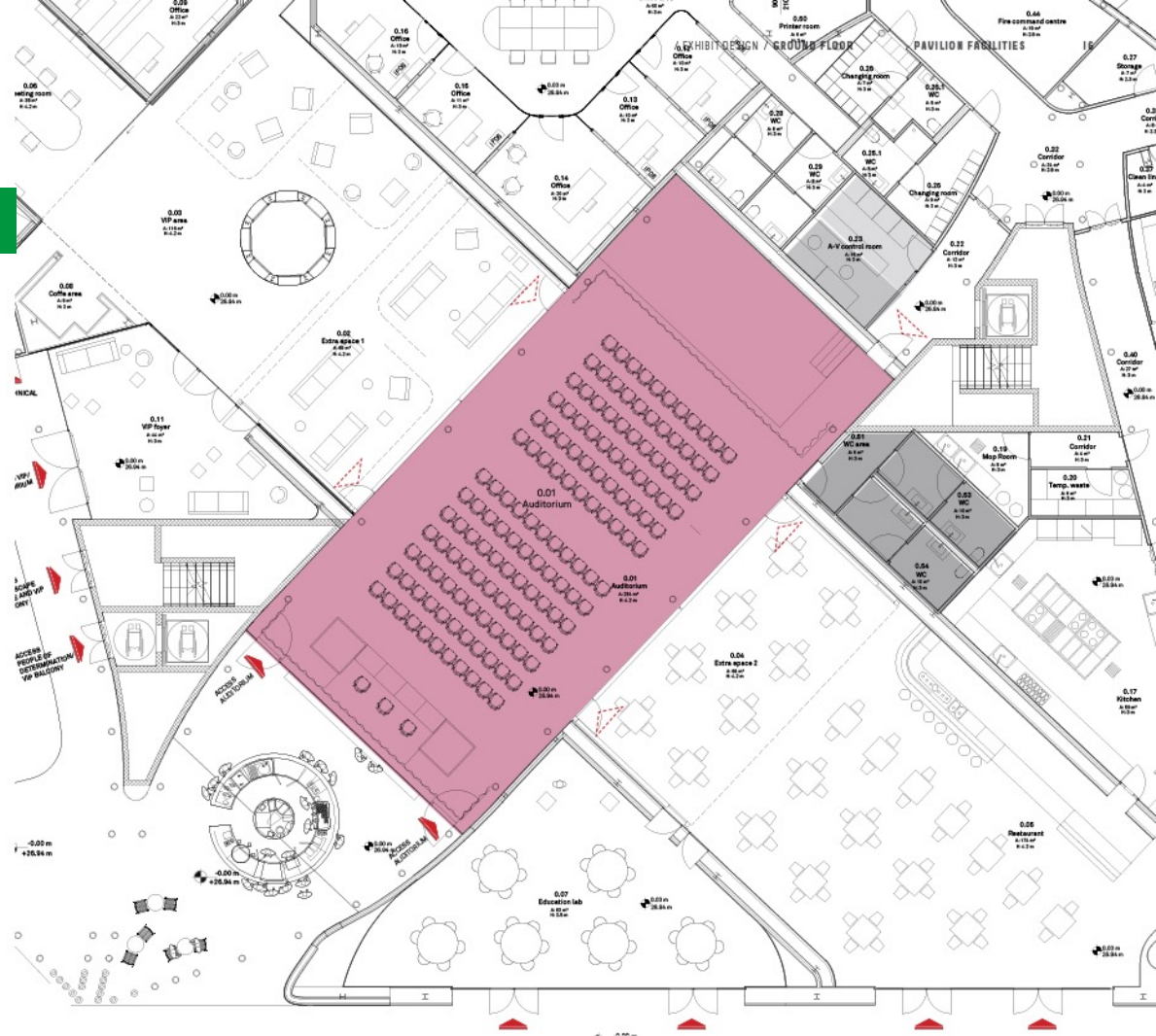
Two Conference Hostesses

Security Service

Accreditation Service for staff and event participants



Estimation with COVID-19 Restrictions
actual capacity: 72 seats + internal staff
Minimum one hour sanitification after every event



AMPHITHEATRE

Multimedia

AUDITORIUM SKY CEILING

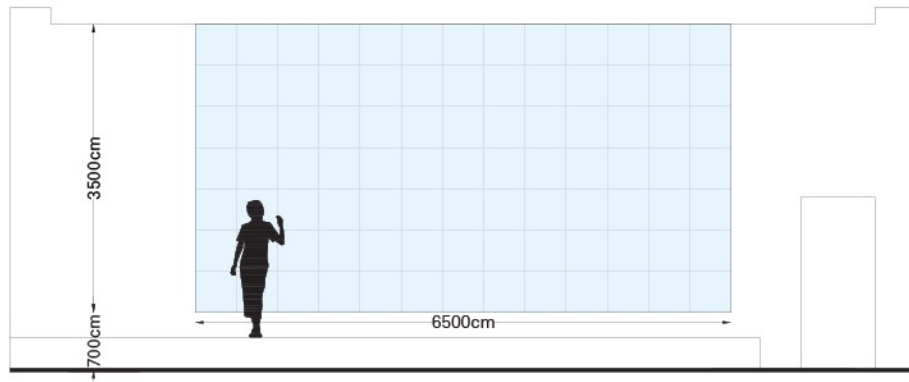
LED SKY CEILING 10.8 CM PITCH

Overall dimension 9,20 * 22,00

AUDITORIUM MAIN SCREEN

LEDSCREEN 2.97 MM PITCH

Overall dimension 3,5 m * 6,5m



GALLERY

Features

A multifunctional area for Institutional events, networking, and B2B meetings. It has a separate entrance and a dedicated foyer.



GALLERY

Configuration A

Set up

Total surface area: 260 m² of which 38 m² are to be set up either as a meeting room or an area for institutional dinners (meeting room area) and 40 m² for the entrance foyer

Total Current Occupancy: 91 people

Fittings (conference table, chairs)

Basic Technical Equipment

N.1 86" 4K LCD monitor (Foyer area)

N.2 fixed 4n.4x55" 4K screens (Gallery area)

N.3 screens on 55" supports

Audio System

Sound, Video and Lighting Engineers, Wi-Fi

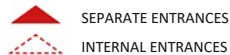
Reception /Accreditation Service

VIP entrance and dedicated Foyer

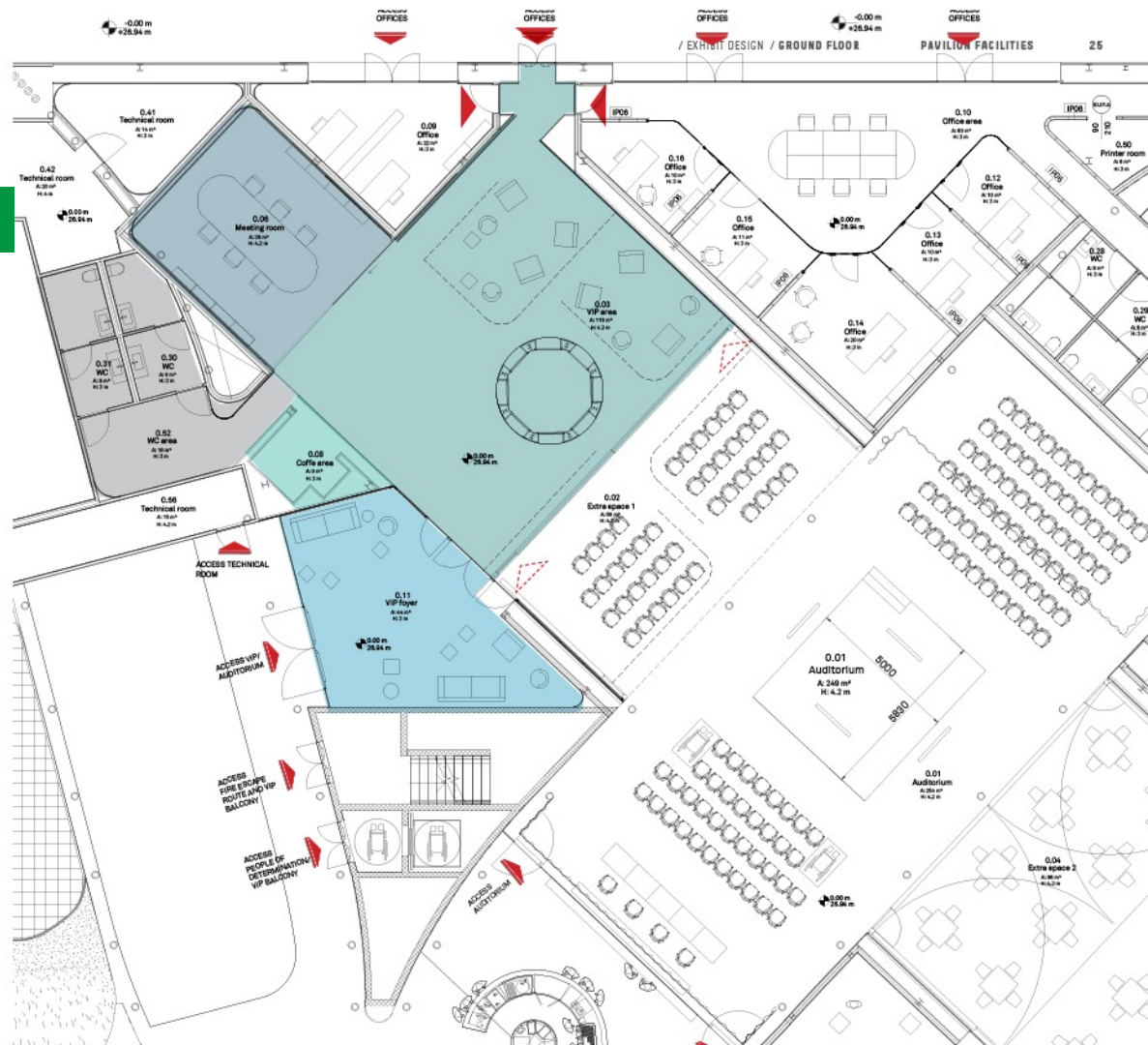
Equipped Coffee Area

Two Conference Hostesses

Security Service



Estimation with COVID-19 Restrictions
actual capacity: standing 91 pax
Minimum one hour sanification: 3 times/day



GALLERY

Configuration B

Set up

Total surface area: 383 m² of which 38 m² are to be set up either as a meeting room or an area for institutional dinners (meeting room area)

Total Current Occupancy: 91 people

Fitting (conference table and chairs)

Basic Technical Equipment

N.1 86" 4K LCD monitor

N. 4 screens on 55" supports

N.2 Video-Walls with 4 55"LCD monitors

Audio System

Sound, Video and Lighting engineers, Wi-Fi

Reception /Accreditation Service

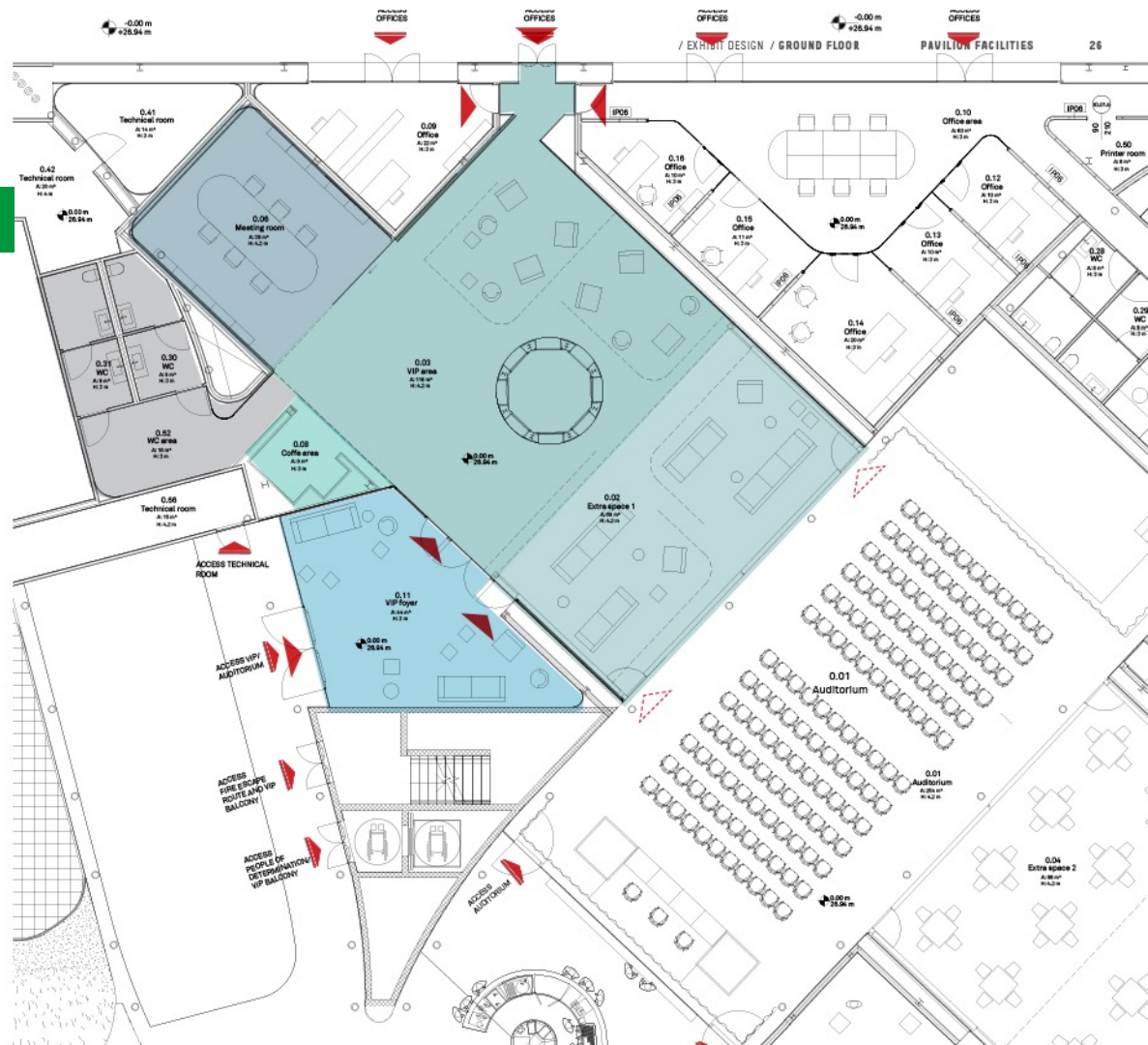
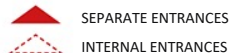
VIP entrance and dedicated foyers

Equipped Coffee Area

Two Conference Hostesses

Security Service

Estimation with COVID-19 Restrictions
actual capacity: standing 91 pax
Minimum one hour sanification: 3 times/day



ACADEMY

Features

The area is dedicated to edutainment activities, workshops, laboratories, and training events.

It has two separate entrances. Thanks to its transparent walls, it offers great visibility to the events it hosts.

It is an area fitted with the necessary equipment for multimedia and “distance learning” classes.



ACADEMY

Configuration A

Set up

Total Surface Area: 83 m²

Total Current Occupancy: 18 seats

Basic Technical Equipment

N.1 86" 4K LCD monitor

N. 4 screens on 55" supports

N.2 Video-Walls with 4 55"LCD monitors

Audio System

Sound, Video and Lighting engineers, Wi-Fi

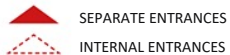
Reception /Accreditation Service

Separate Entrances

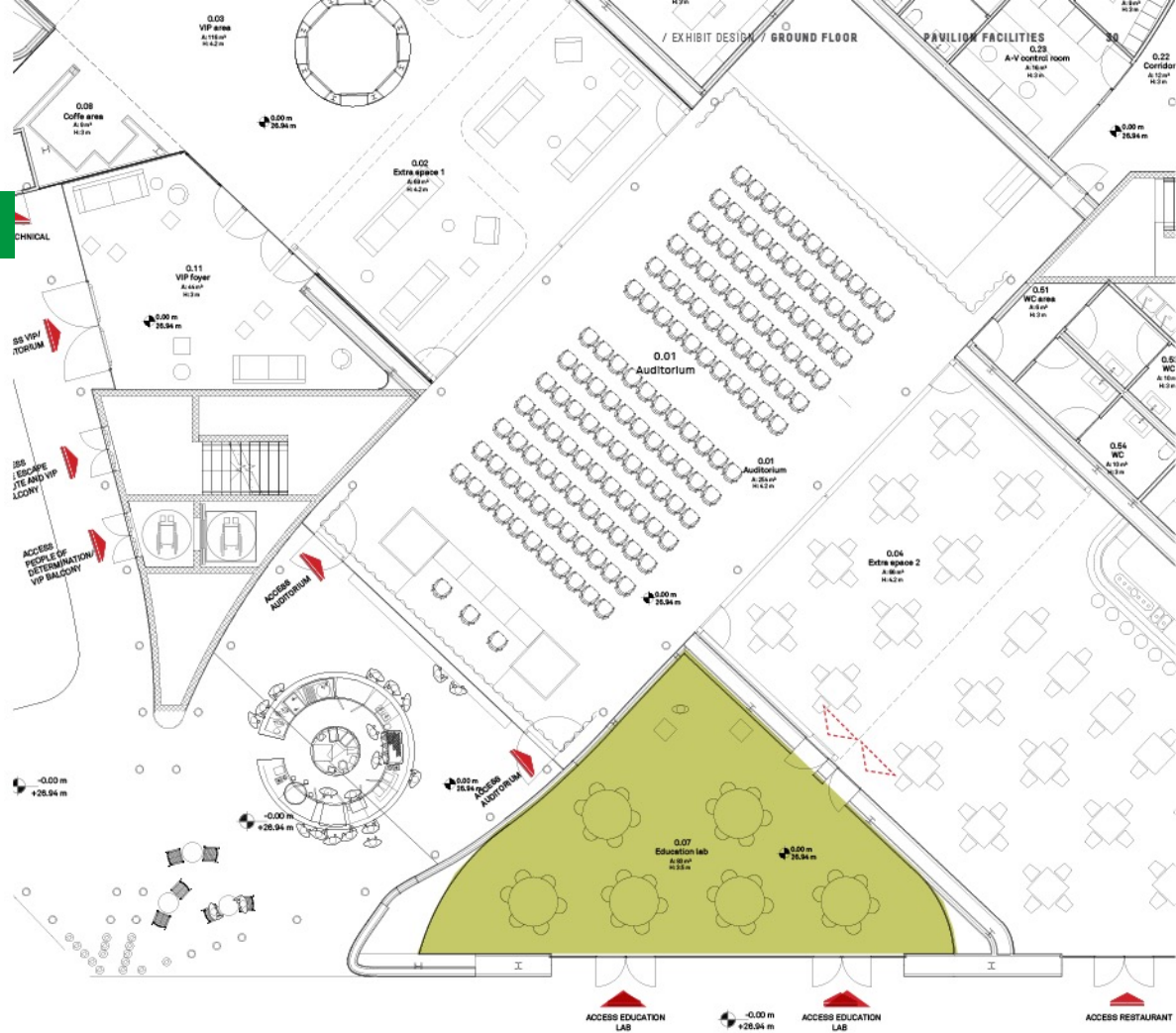
Two Conference Hostesses

Security Service

Accreditation Service for staff and event participants



Estimation with COVID-19 Restrictions
actual capacity: 18 people
Minimum one hour sanitification after every event



ACADEMY

Configuration B

Set up

Total Surface Area: 83 m²

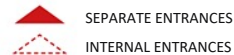
Total Current Occupancy: 21 seats

Basic Technical Equipment

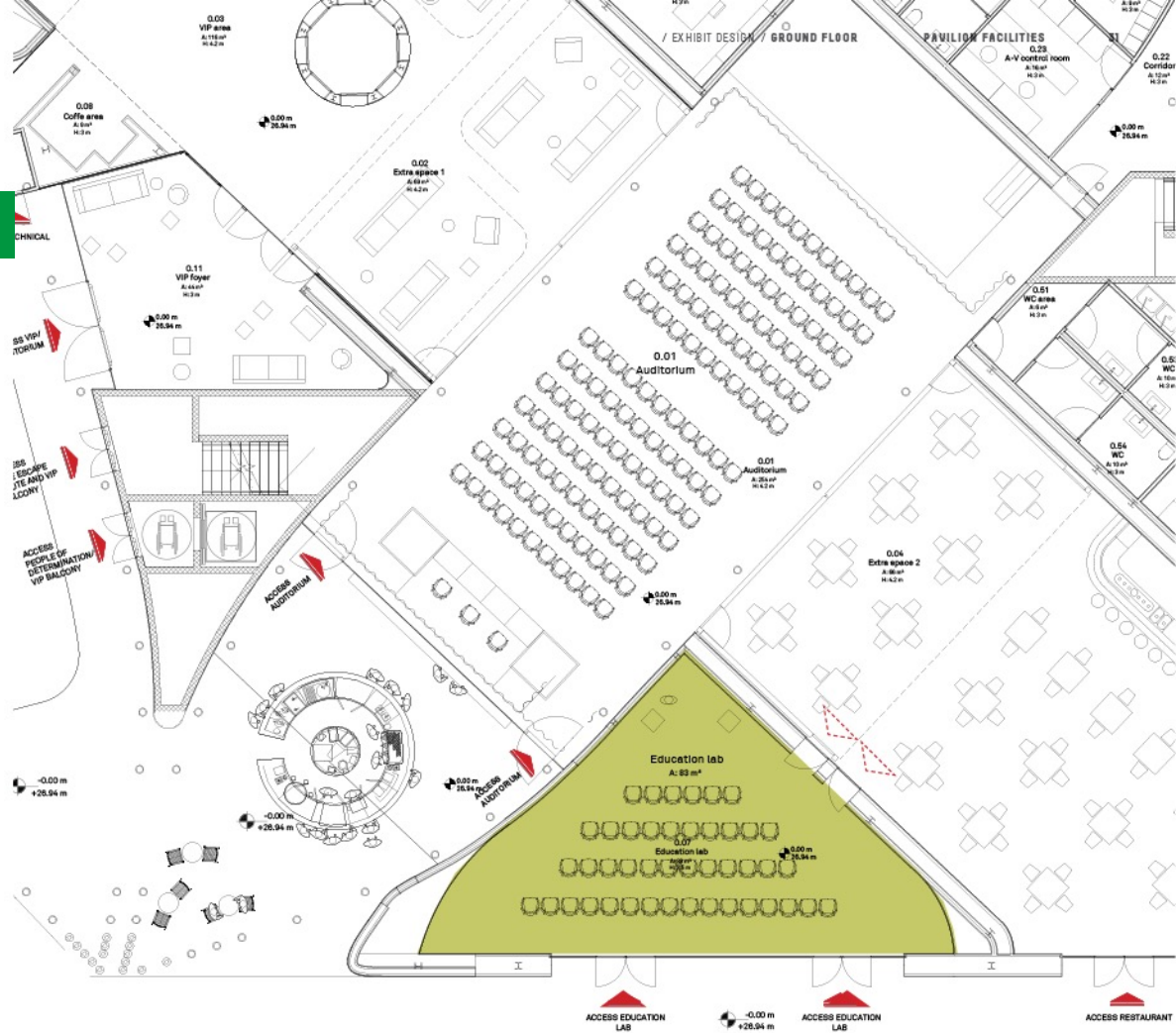
LCD Screen with a Video-Conferencing and Live-Streaming System
Camera equipped with digital microphone, audio and stereo speakers
N.2 86" 4K LCD monitors, touch screen
Sound, Video and Lighting Engineers, Wi-Fi

Reception /Accreditation Service

Two Conference Hostesses
Separate entrances
Security service
Accreditation Service for staff and event participants



Estimation with COVID-19 Restrictions
actual capacity: 21 people
Minimum one hour sanitification after every event



Level 1

Overall view

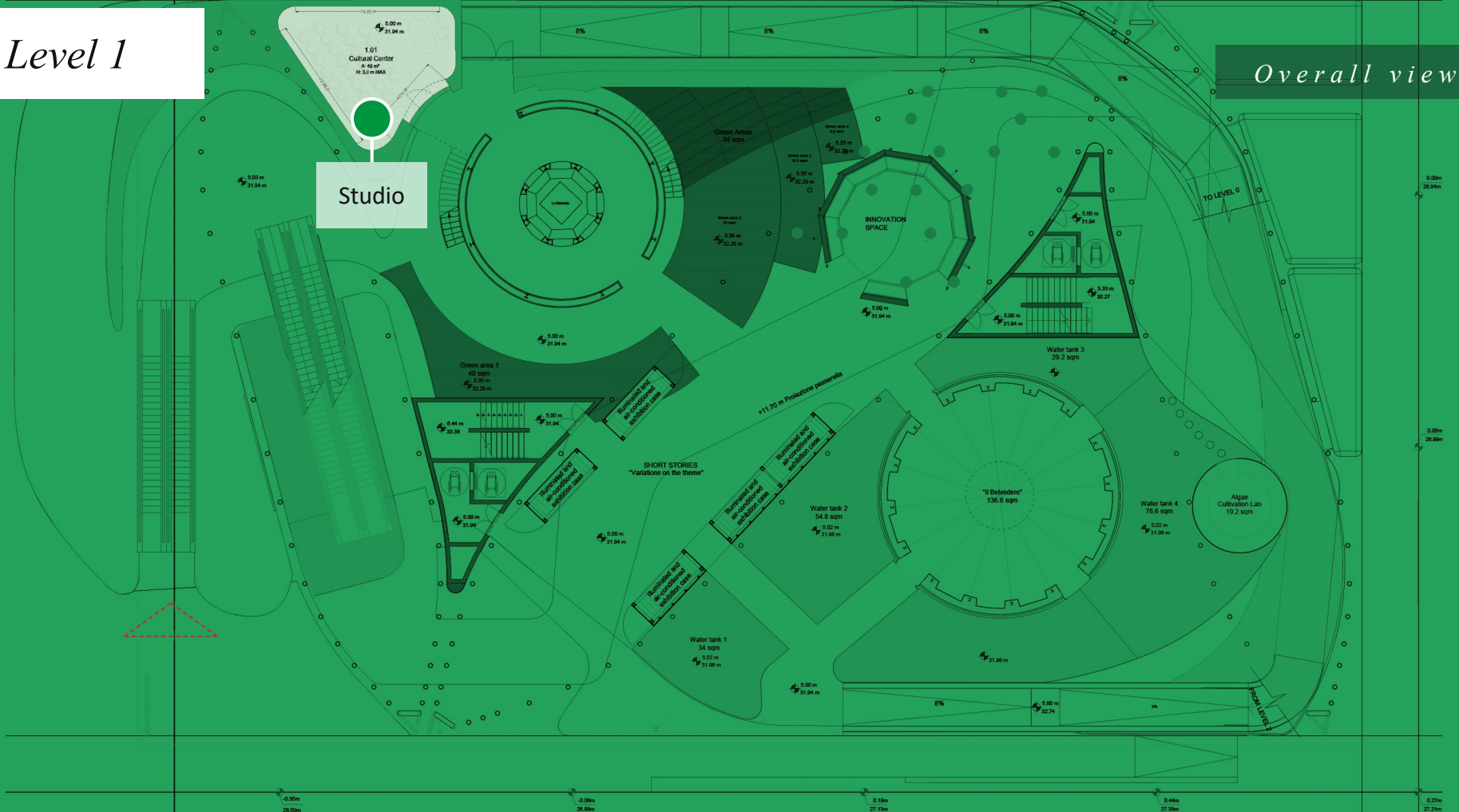
Studio

1.01

Cultural Center

A 44.4 m²

H 3.3 m MAX



STUDIO

Features

The area is located at the very center of the visitors' experience which is dedicated to cultural, training, communication events as well as for special guests, best practice and presentations. The area is equipped with systems for multimedia and "distance learning" classes.



STUDIO

Areas and entrances

Set up

Total Surface Area: 48 m²

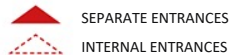
Total Current Occupancy: 12 people

Basic Technical Equipment

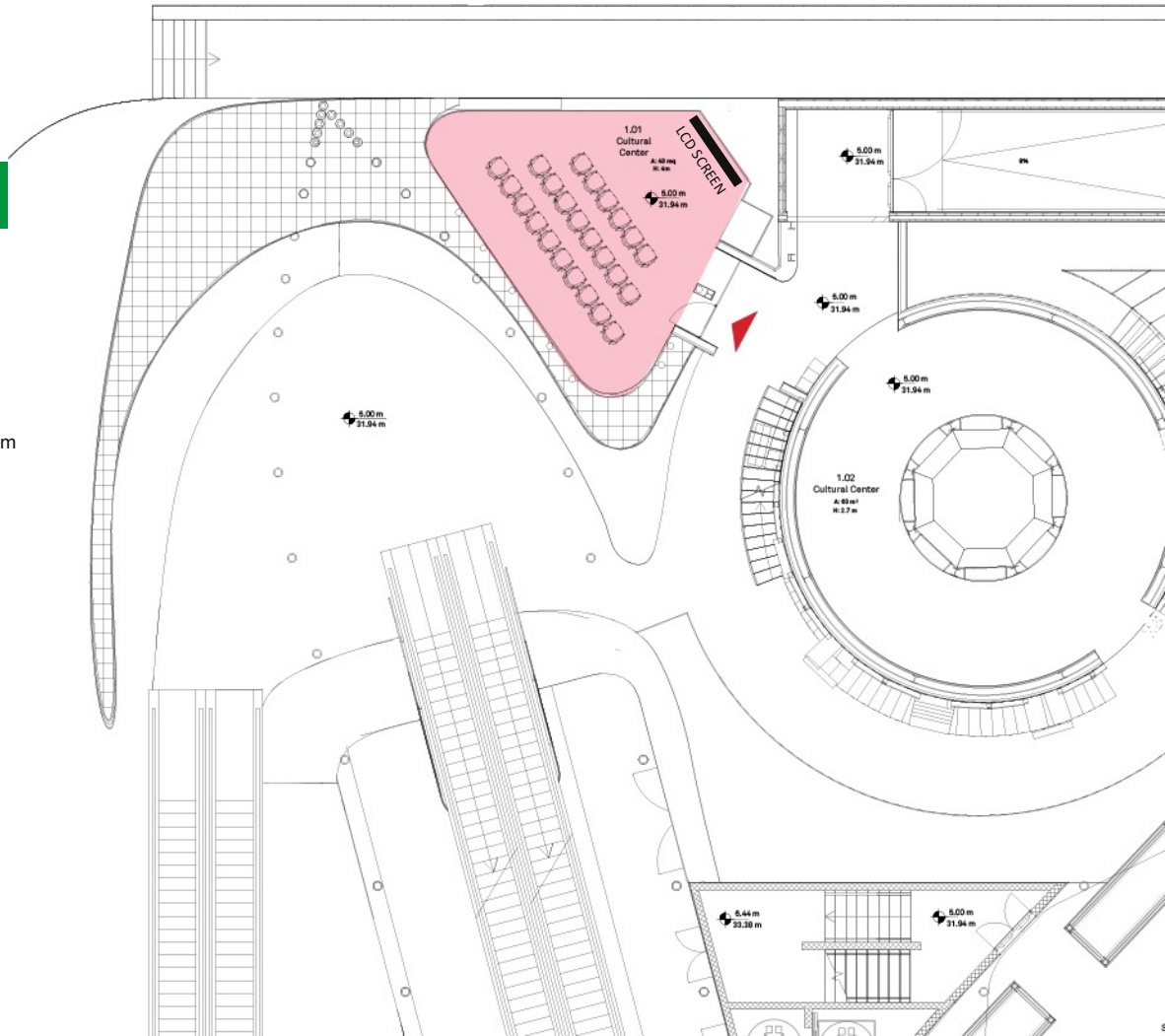
LCD Screen with a Video-Conferencing and Live-Streaming System
N.1 86" 4K LCD monitor, touch screen included in an all-in-one integrated system
Camera equipped with microphone and stereo speakers
Sound, Video and Lighting Engineers, WI-FI

Reception /Accreditation Service

Conference Hostesses
Security Service



Estimation with COVID-19 Restrictions
actual capacity: 12 people
Minimum one hour sanitification after every event





ITALIA

LA BELLEZZA UNISCE LE PERSONE
BEAUTY CONNECTS PEOPLE
الجمال يجمع الناس

OFFICIAL PARTICIPANT – ITALY